



# WanXiang Solar

## SOLAR MODULES

# WXS65P



### Specifications

Cell Type	Multi-Silicon solar Cells
Cell Size	78mm×156mm
No. of cells and connections	44(4×11)
Dimension of module(mm)	936×667×28mm
Weight	6.5Kg

### Electrical Characteristics

Model	WXS65P
Maximum power at STC(Pm)	65W
Open-circuit voltage(Voc)	26.62V
Short-circuit current(Isc)	3.38A
Voltage at Pmax(Vmp)	21.12V
Current at Pmax(Imp)	3.08A

(STC:Irradiance AM1.5, 1000W/m<sup>2</sup>, 25°C)

### Limits

Fuse rating	10A
Maximum system voltage	715VDC
Operating temperature	-40~+85°C

### Temperature and Coefficients

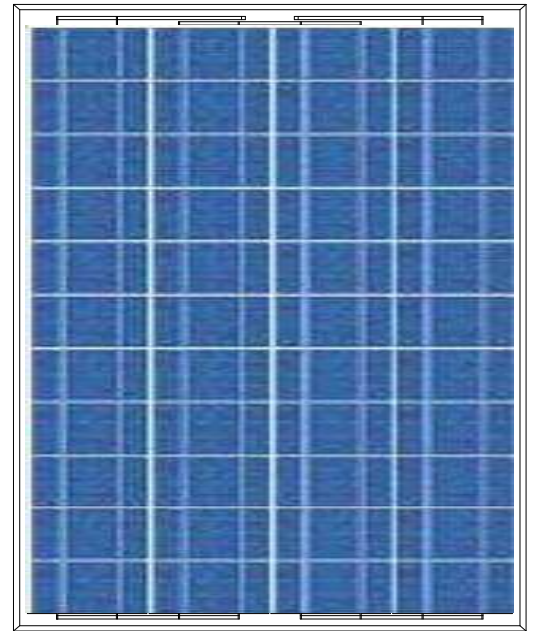
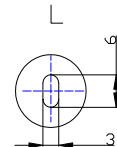
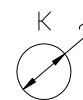
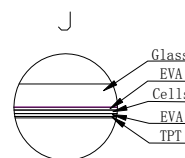
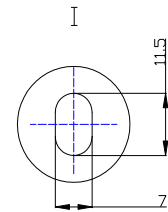
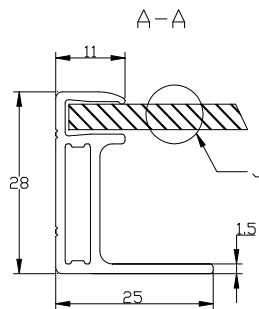
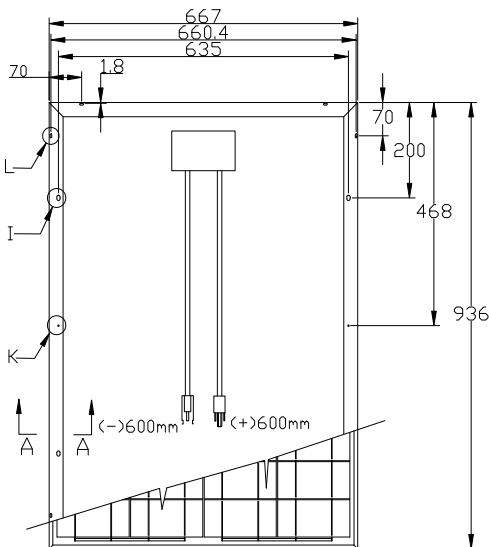
NOCT	48°C ±2°C
Temp coefficient of Voc	-(85 ±5)mV/°C
Temp coefficient of Isc	(0.08 ±0.015)%/°C
Temp coefficient of power	-(0.4 ±0.05)%/°C

NOCT:Nominal Operation Cell Temperature

### Output

Type of output terminal	Junction box
Cable	4mm <sup>2</sup>
Cable lengths	600mm
Connector	Plug type

### Mechanical Characteristics



### Characteristics Curve

