



WanXiang Solar

SOLAR MODULES

WXS45P



Specifications

Cell Type	Multi-Silicon solar Cells
Cell Size	78mm×156mm
No. of cells and connections	32(4×8)
Dimension of module(mm)	696×667×28mm
Weight	5.0Kg

Electrical Characteristics

Model	WXS45P
Maximum power at STC(Pm)	45W
Open-circuit voltage(Voc)	19.36V
Short-circuit current(Isc)	3.25A
Voltage at Pmax(Vmp)	15.36V
Current at Pmax(Imp)	2.93A

(STC:Irradiance AM1.5, 1000W/m², 25°C)

Limits

Fuse rating	10A
Maximum system voltage	715VDC
Operating temperature	-40~+85°C

Temperature and Coefficients

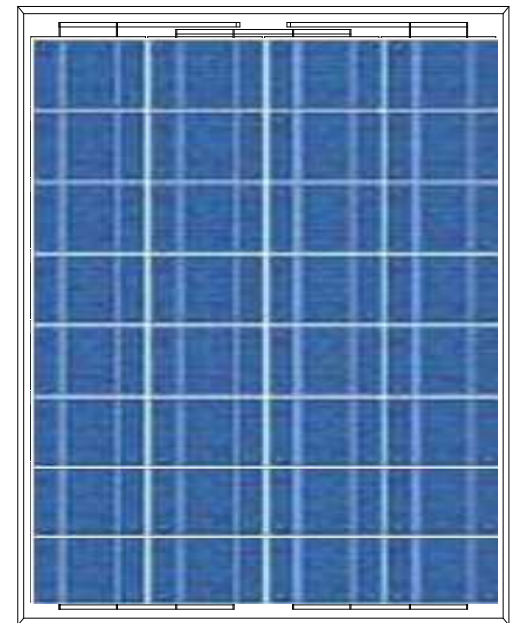
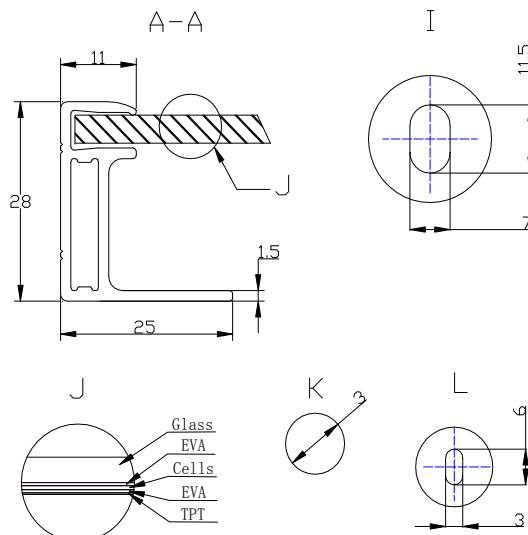
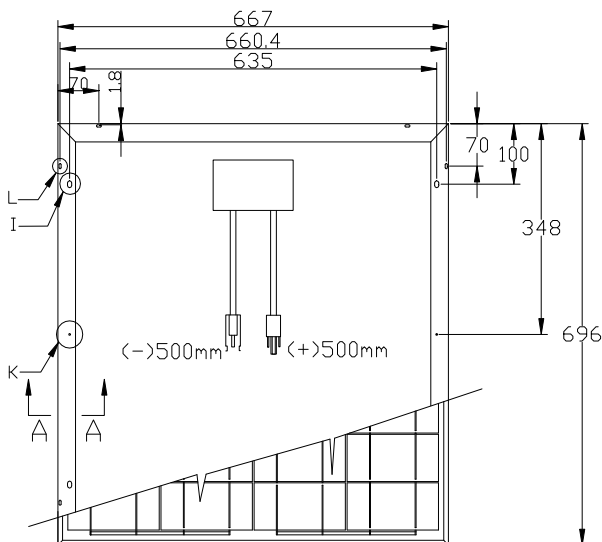
NOCT	48°C ±2°C
Temp coefficient of Voc	-(65 ±5)mV/°C
Temp coefficient of Isc	(0.08 ±0.015)%/°C
Temp coefficient of power	-(0.4 ±0.05)%/°C

NOCT:Nominal Operation Cell Temperature

Output

Type of output terminal	Junction box
Cable	4mm ²
Cable lengths	500mm
Connector	Plug type

Mechanical Characteristics



Characteristics Curve

