



WanXiang Solar



EUROTEST

Laboratori



SOLAR MODULES

WXS210S

Specifications

| | |
|------------------------------|--------------------------|
| Cell Type | Mono-Silicon solar Cells |
| Cell Size | 125mm×125mm |
| No. of cells and connections | 91(7×13) |
| Dimension of module(mm) | 1704×942×40mm |
| Weight | 19.0Kg |

Electrical Characteristics

| | |
|----------------------------|---------|
| Model | WXS210S |
| Maximum power at STC(Pm) | 210W |
| Open-circuit voltage(Voc) | 55.33V |
| Short-circuit current(Isc) | 4.99A |
| Voltage at Pmax(Vmp) | 45.86V |
| Current at Pmax(Imp) | 4.58A |

(STC:Irradiance AM1.5, 1000W/m², 25°C)

Limits

| | |
|------------------------|-----------|
| Fuse rating | 15A |
| Maximum system voltage | 1000VDC |
| Operating temperature | -40~+85°C |

Temperature and Coefficients

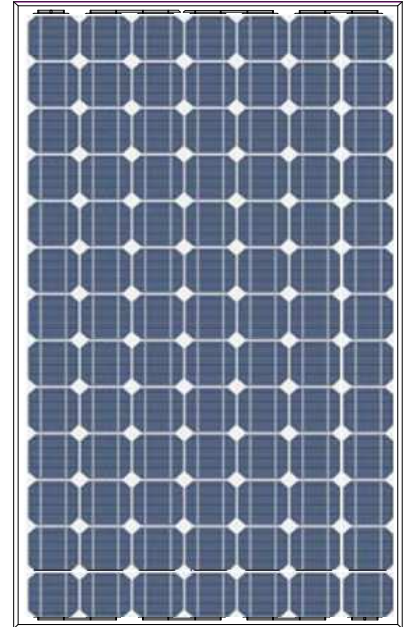
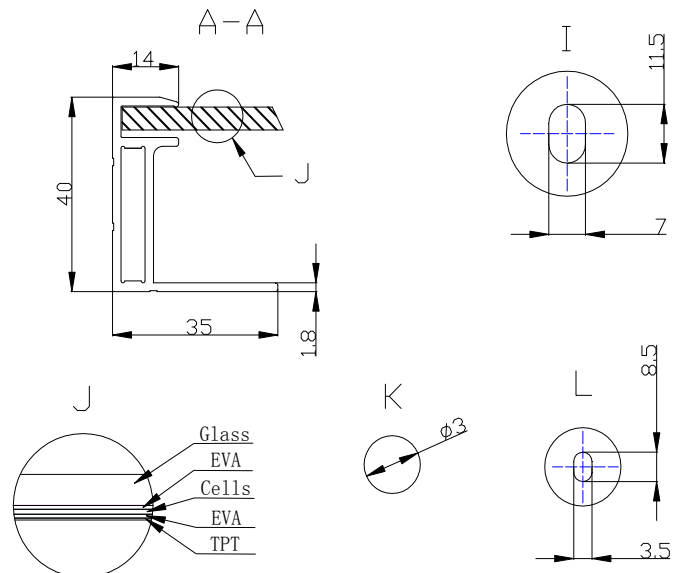
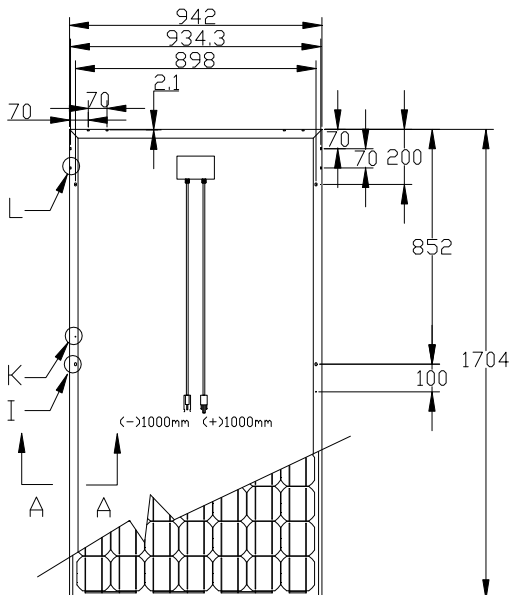
| | |
|---------------------------|-------------------|
| NOCT | 48°C±2°C |
| Temp coefficient of Voc | -(0.33±0.03)%/°C |
| Temp coefficient of Isc | (0.035±0.015)%/°C |
| Temp coefficient of power | -(0.5±0.05)%/°C |

NOCT:Nominal Operation Cell Temperature

Output

| | |
|-------------------------|------------------|
| Type of output terminal | Junction box |
| Cable | 4mm ² |
| Cable lengths | 1000mm |
| Connector | Plug type |

Mechanical Characteristics



Characteristics Curve

